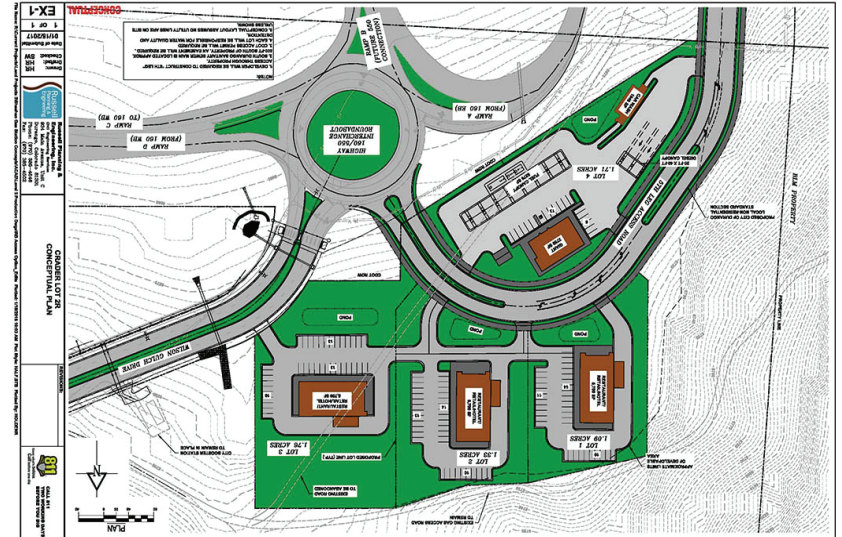


Southfork Gateway

Located in Durango's Newly Zoned Regional Retail District



Traffic:

US 160 Adjacent to Project (MP 88.36 to 91.5)

2017 AADT = 26,000 (CDOT OTIS)

2025 ADT = 87,900 (CDOT Projected from SEH Study)

2030 AADT = 91,450 (CDOT Projected from SEH Study)

Wilson Gulch Drive

2015 AADT = 2,000 (City of Durango, Goff Study)

2035 AADT = 19,000 (City of Durango, Goff Study)

US 550, Farmington Hill (MP 15.6 to 16.5)

2017 AADT = 6,700 (CDOT OTIS)

2025 AADT = 19,000 (CDOT Projected from SEH Study)

2030 AADT = 19,550 (CDOT Projected from SEH Study)



Tom Caver, Jr
tom@durangolofts.com
970.749.2343
www.durangolofts.com