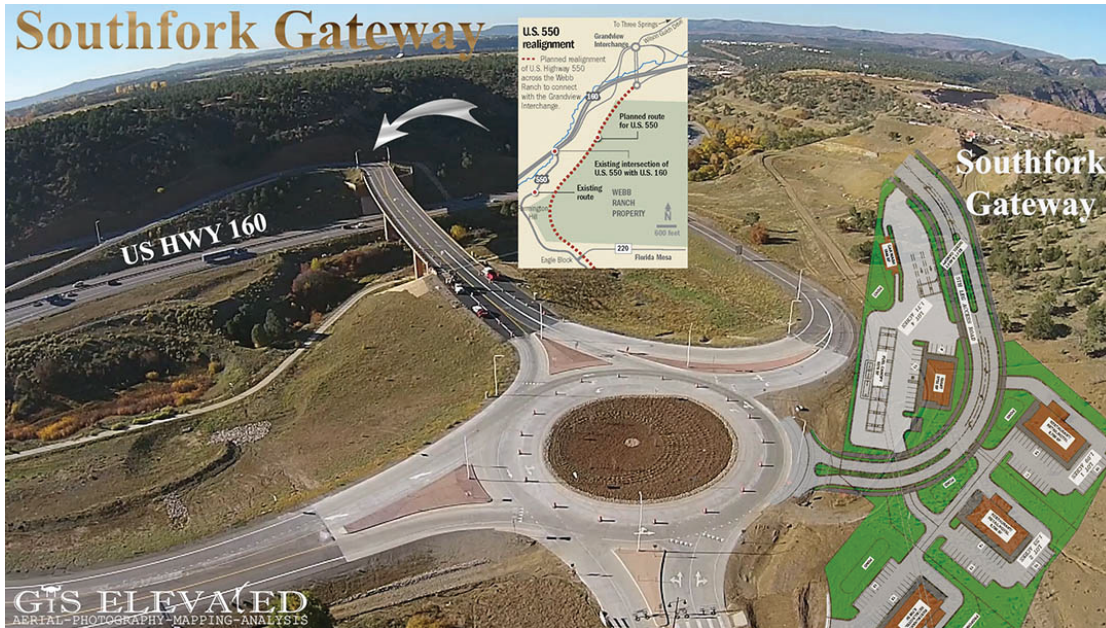


# Southfork Gateway

*Located in Durango's Newly Zoned Regional Retail District*



**New Commercial Development w/ Acreage lots  
Zoned for Restaurant/ Retail/ Hotel/ Office  
Developer Will Sell/ Lease or Build to Suit  
Located at Highway 160/550 Interchange  
Highest Traffic Counts in Durango Area**

**CAVER**  
and associates

**Tom Caver, Jr**  
[tom@durangolofts.com](mailto:tom@durangolofts.com)  
**970.749.2343**  
[www.durangolofts.com](http://www.durangolofts.com)